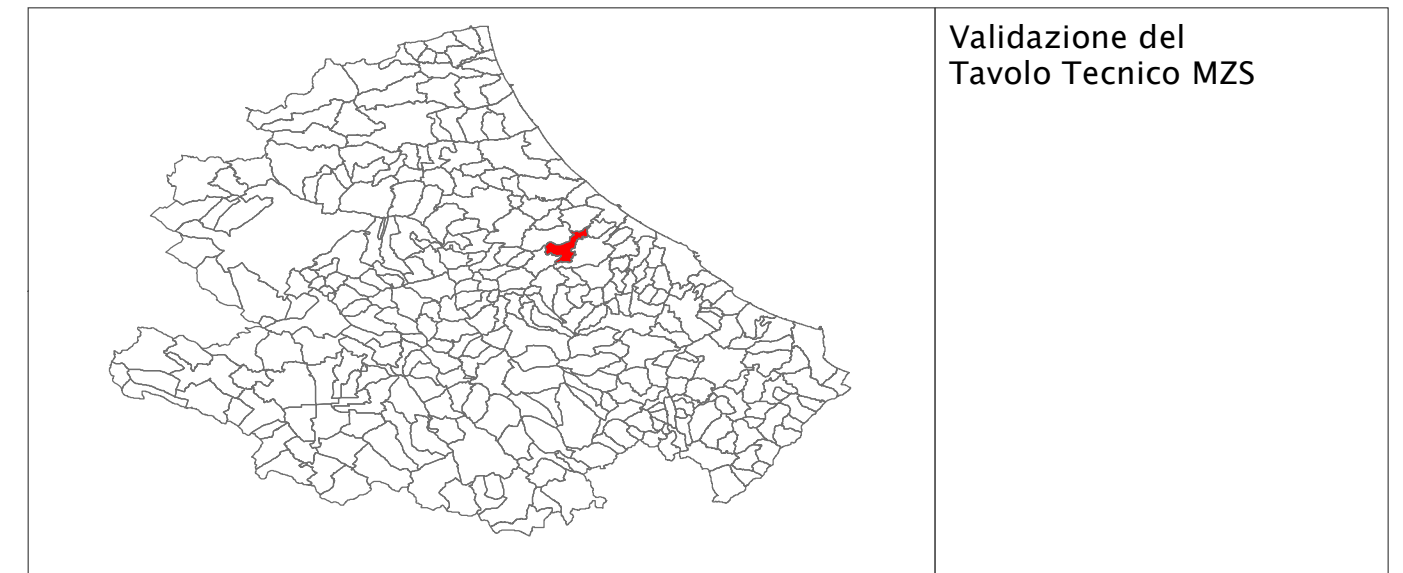


# MICROZONAZIONE SISMICA

## Carta delle Microzone Omogenee in Prospettiva Sismica

SCALA 1:5.000  
Base topografica: CTR 1:5.000 fornita dal Servizio Cartografico della Regione Abruzzo - Sistema di Riferimento Geografico WGS 1984 Fuso 33N

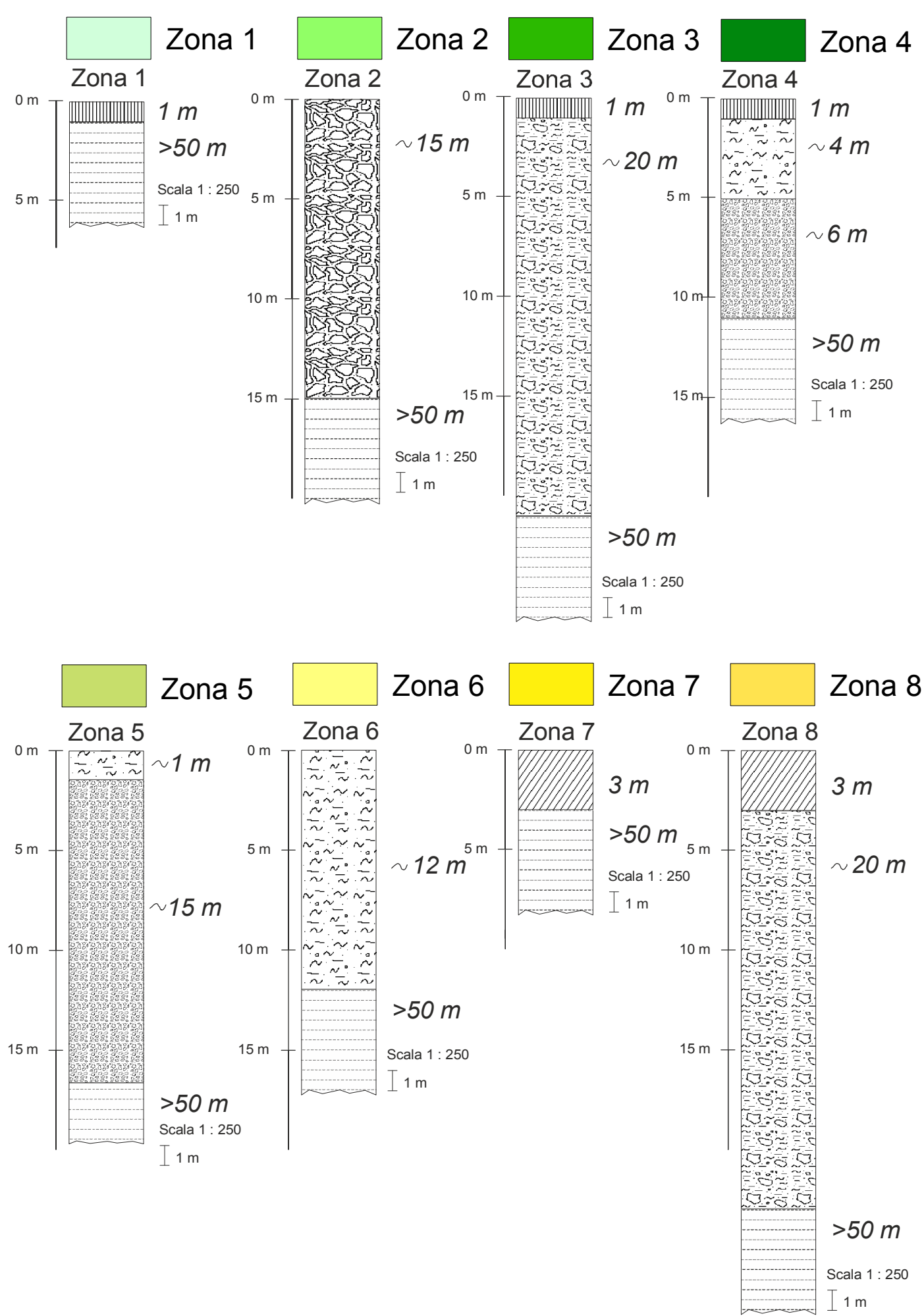
REGIONE ABRUZZO  
Comune di  
Cepagatti (PE) Tav. B



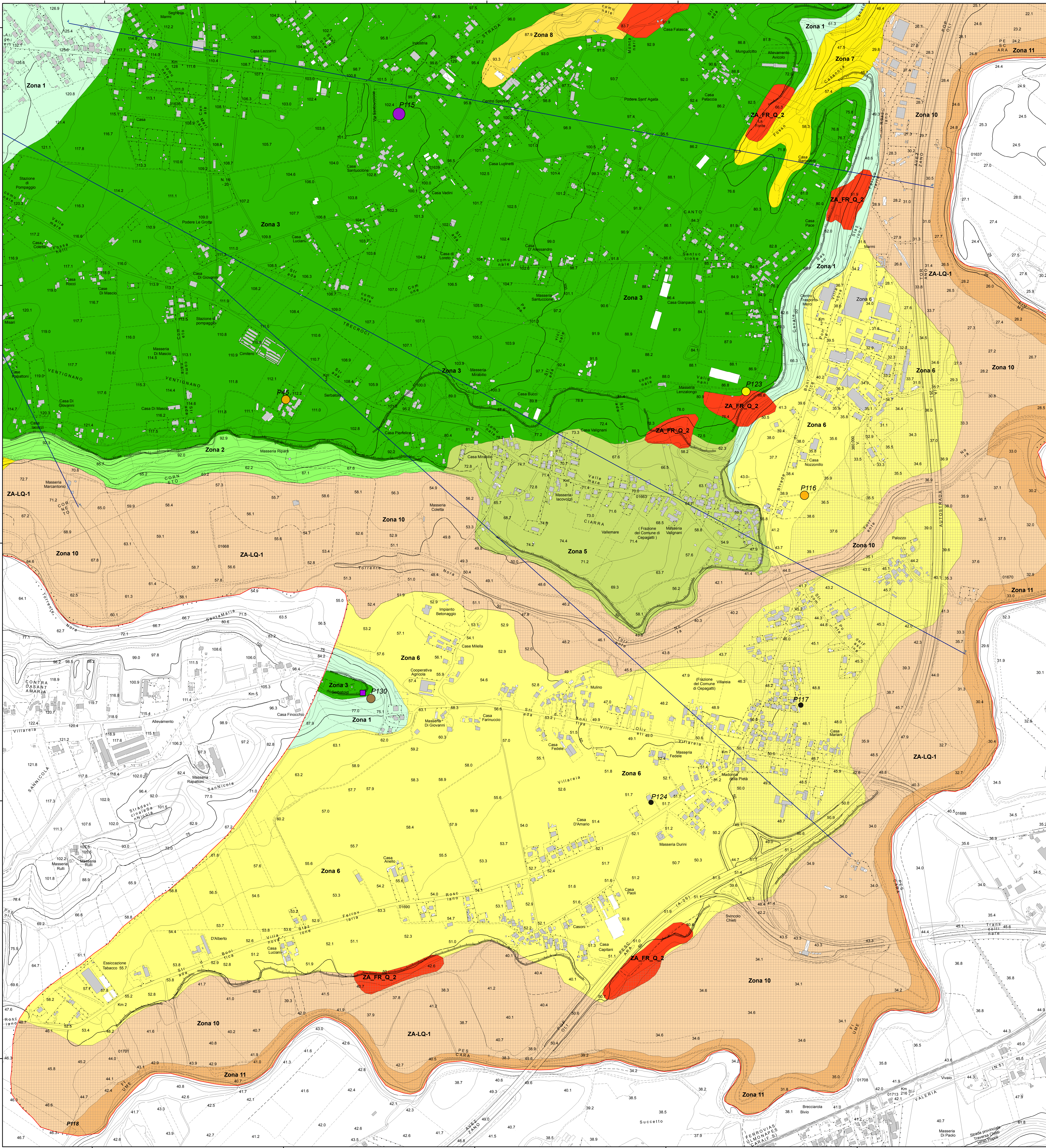
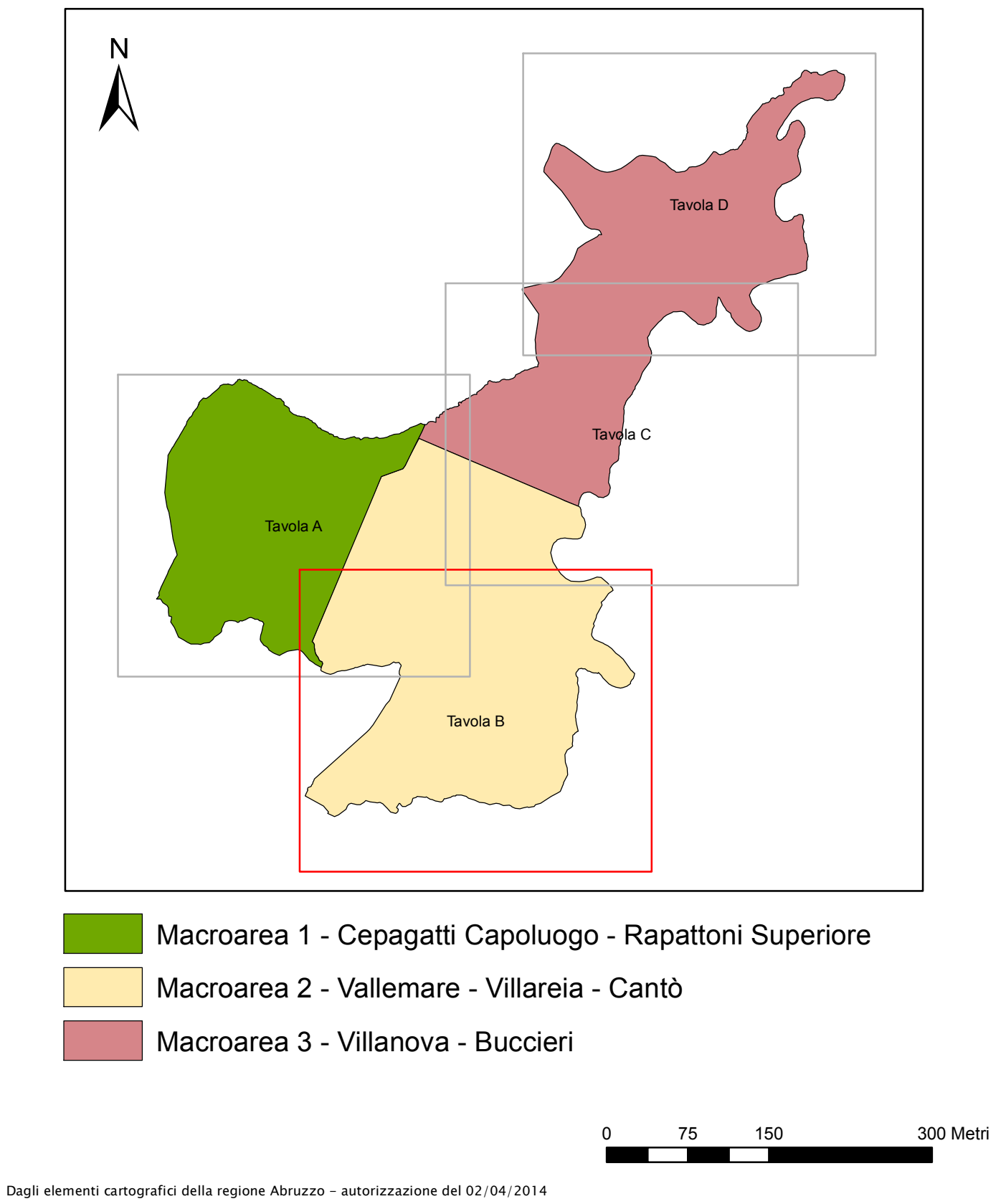
Tecnico incaricato: Geol. - Sandro Pozzi  
Data  
Collaboratore: Geol. - Marco Petaccia

### Legenda

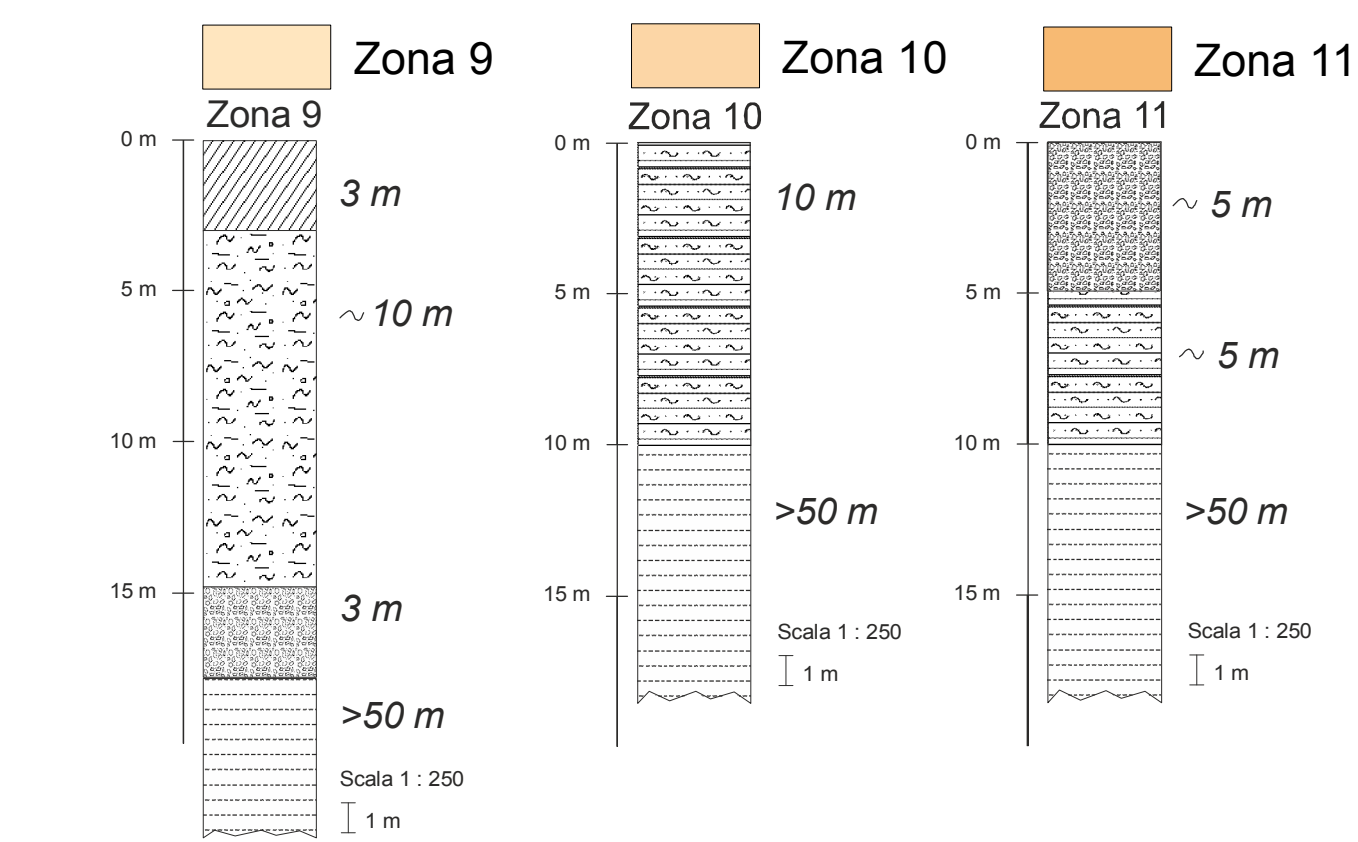
#### ZONE STABILI SUSCETTIBILI DI AMPLIFICAZIONI LOCALI



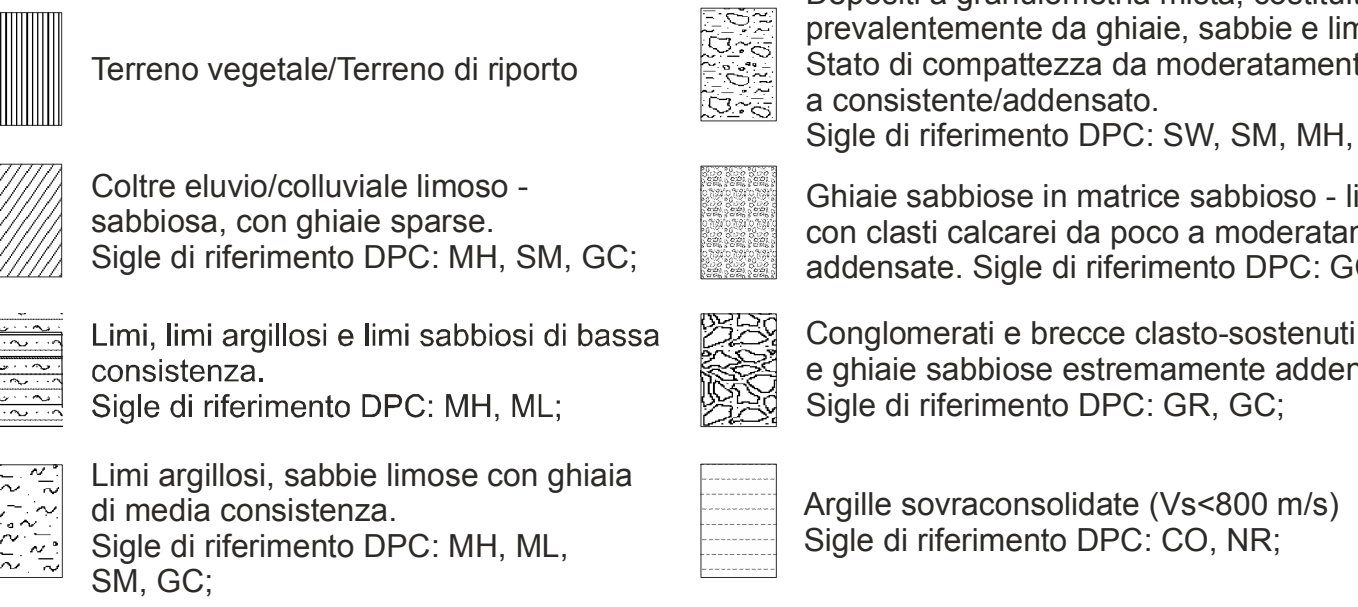
#### Zonizzazione del territorio comunale e Quadro d'Unione



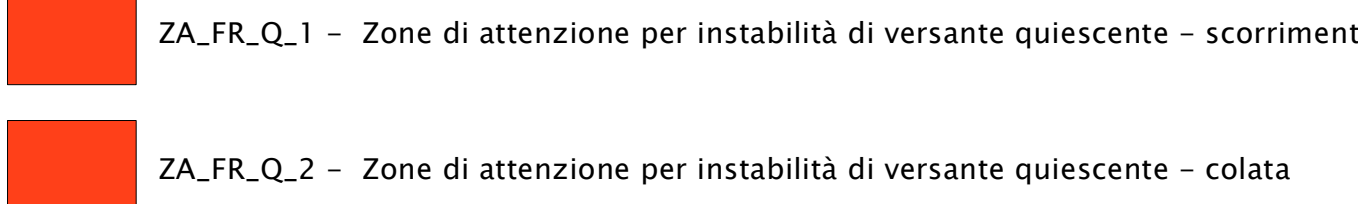
#### ZONE STABILI SUSCETTIBILI DI AMPLIFICAZIONI LOCALI



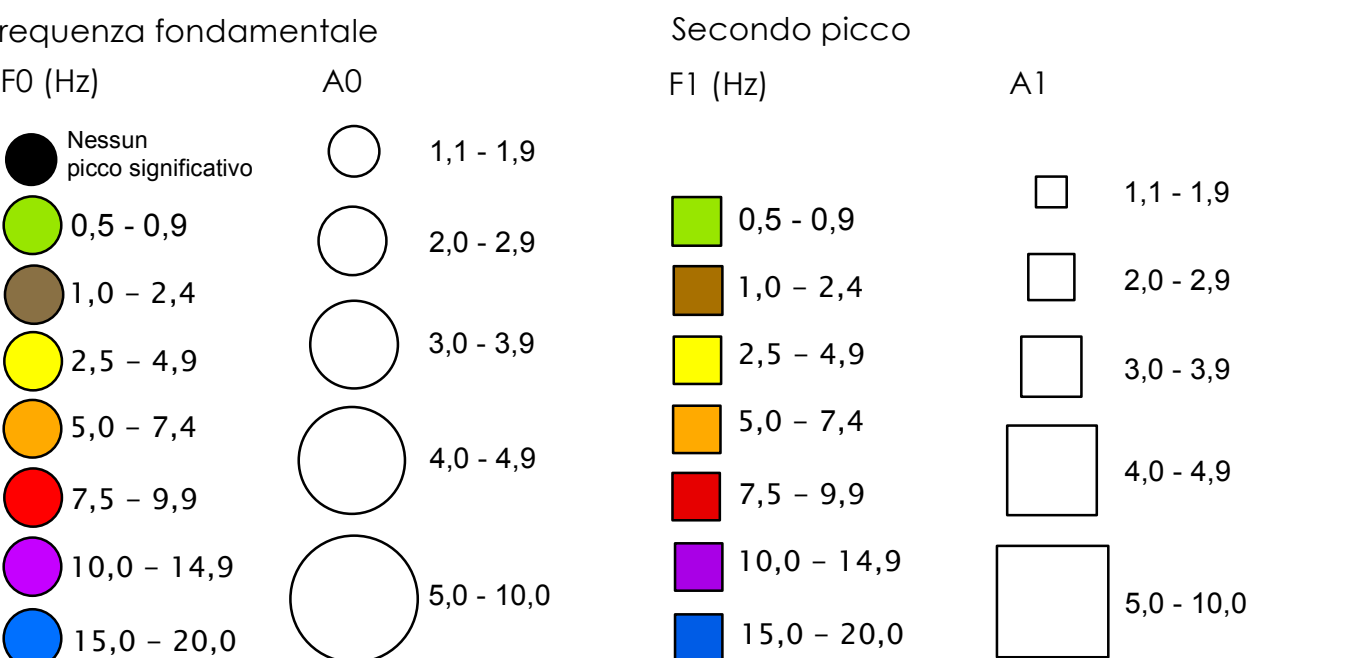
#### Legenda dei simboli



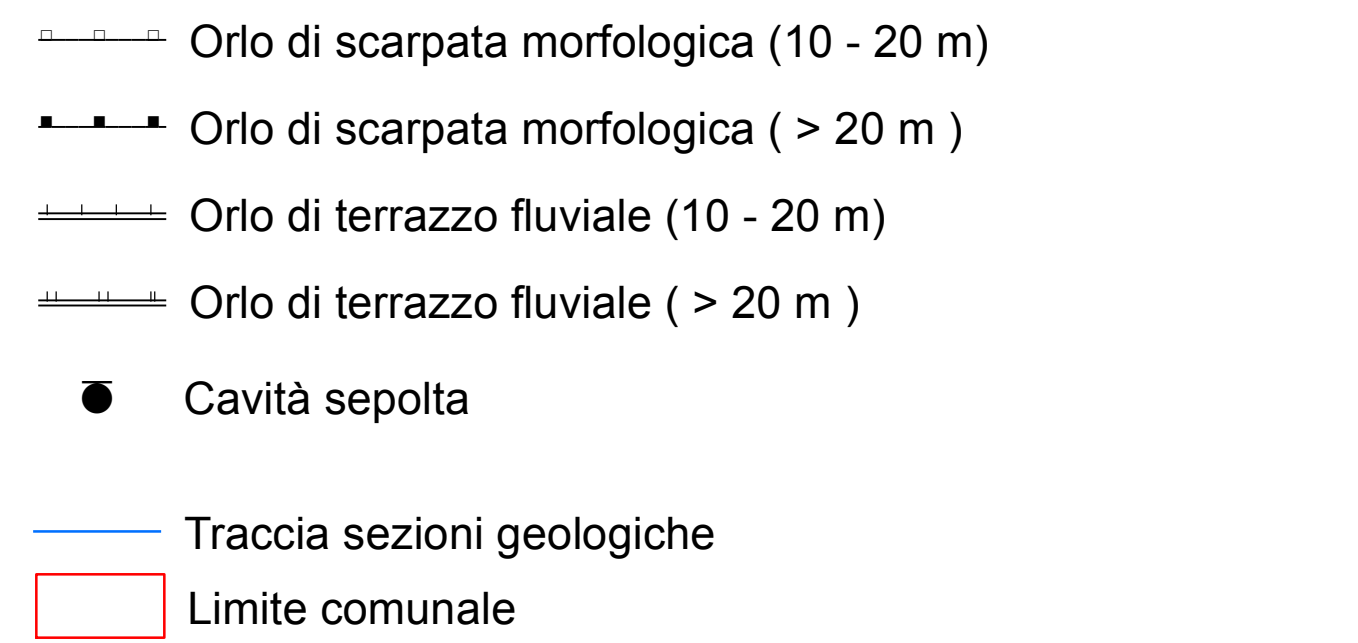
#### ZONE DI ATTENZIONE PER LE INSTABILITA'



#### LEGENDA DELLE FREQUENZE DI RISONANZA



#### Forme di superficie e sepolte



#### Curve HVSR

